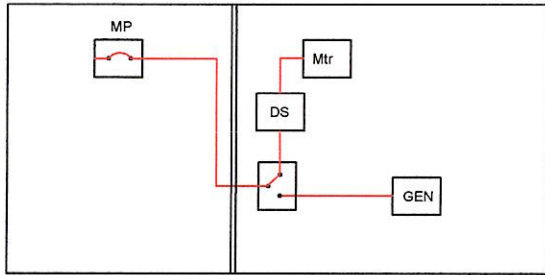
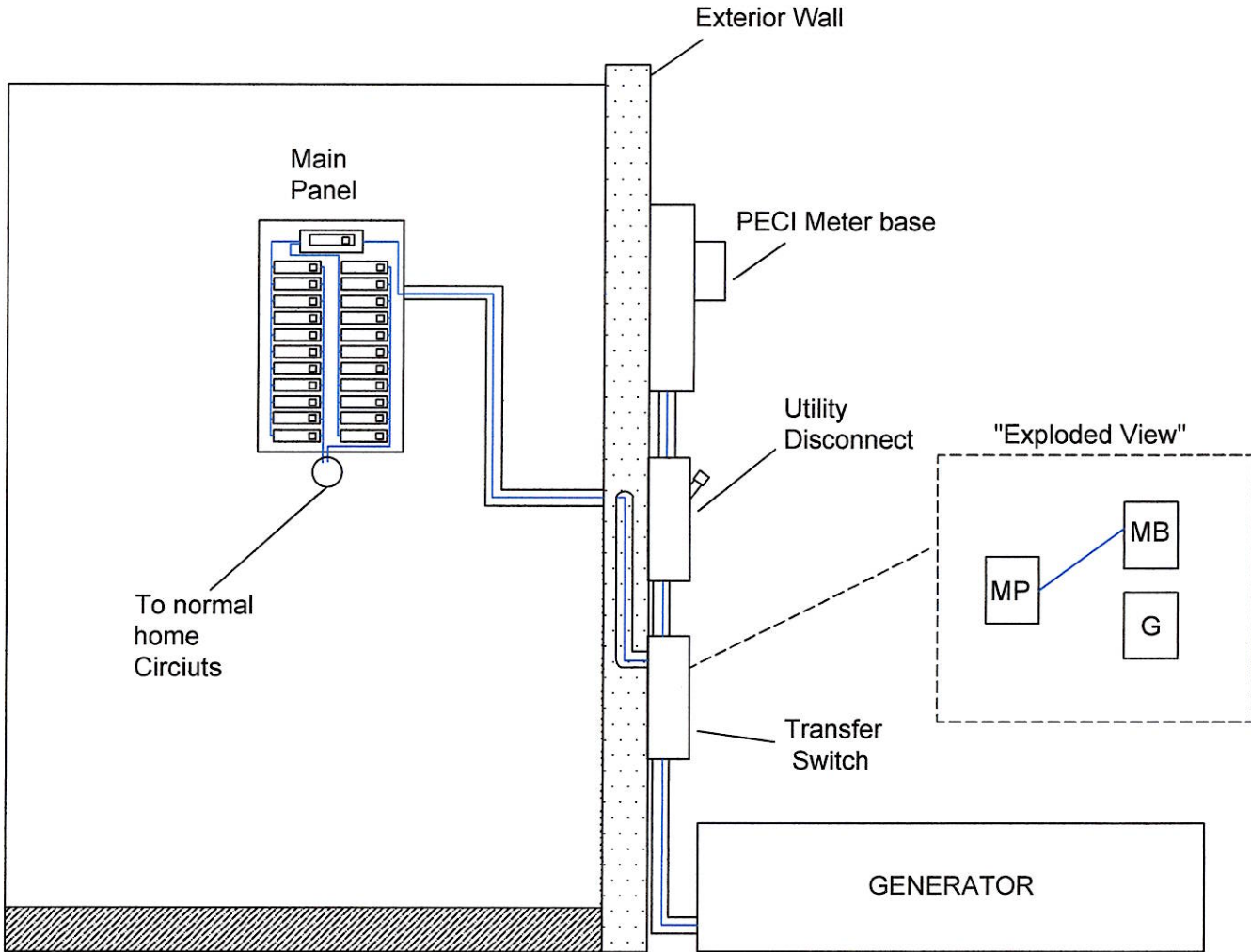


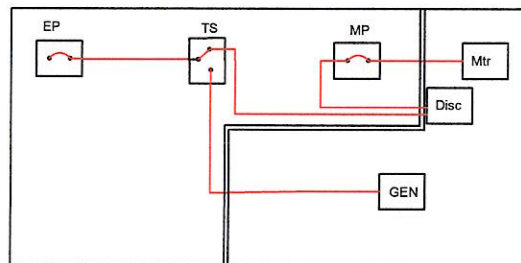
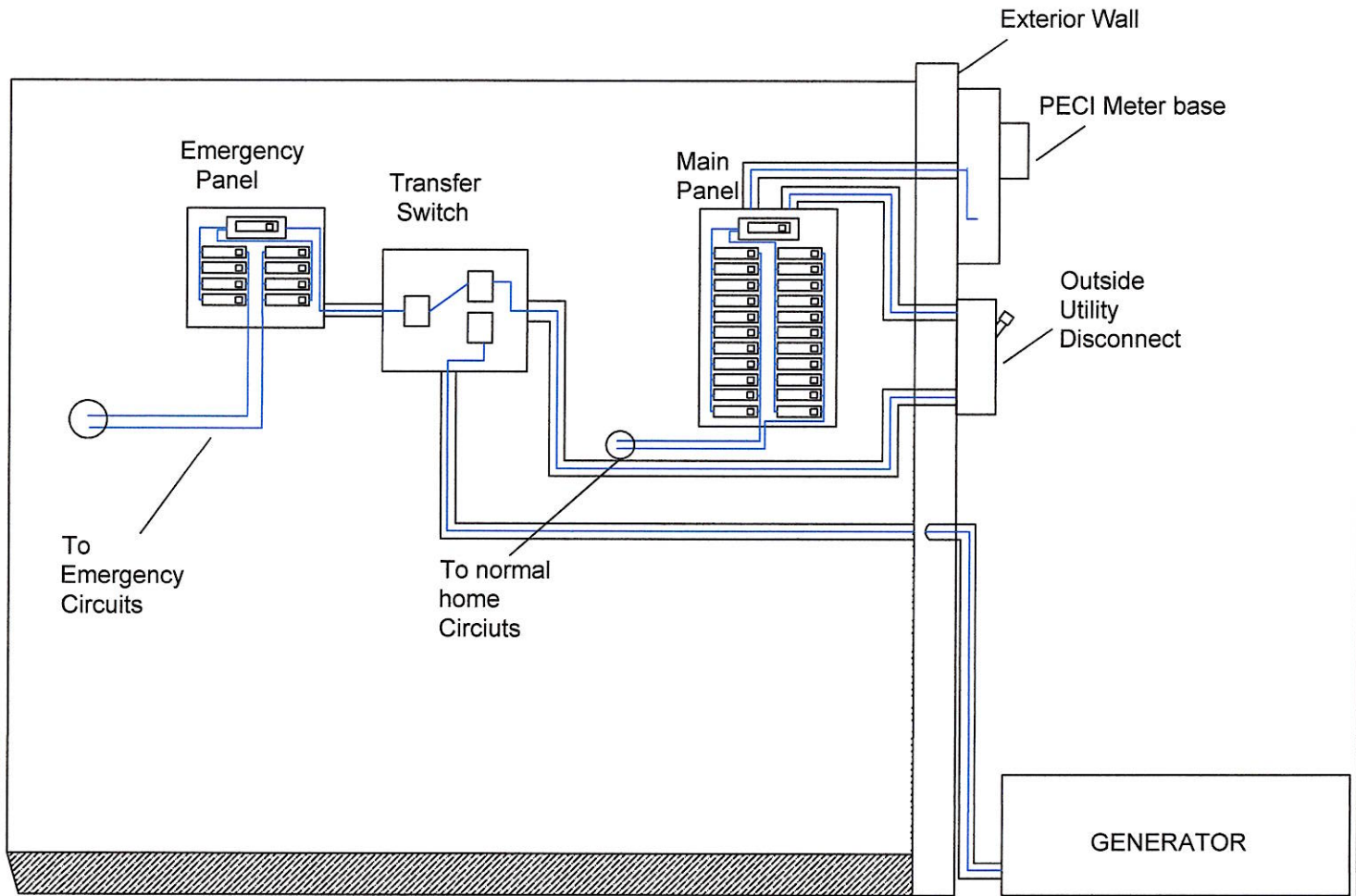
GENERATOR HOME



NOTES

1. Transfer Switch to be "Double Pole/Double Throw"
2. Transfer Switch to be Mechanically designed to prevent connecting both. The "Utility Source" & "Generator" in parallel.
3. Transfer Switch must be "Break before Make" type.
4. The Jurisdiction- having authority must inspect and approve installation.
5. Installation must comply with all pertinent codes & ordinances
6. Outside Utility disconnect must be visible break, lockable, & located within 10' of meter

GENERATOR EMERGENCY PANEL



NOTES

1. Transfer Switch to be "Double Pole/Double Throw"
2. Transfer Switch to be Mechanically designed to prevent connecting both. The "Utility Source" & "Generator" in parallel.
3. Transfer Switch must be "Break before Make" type.
4. The Jurisdiction- having authority must inspect and approve installation.
5. Installation must comply with all pertinent codes & ordinances
6. Outside Utility disconnect must be visible break, lockable, & located within 10" of meter