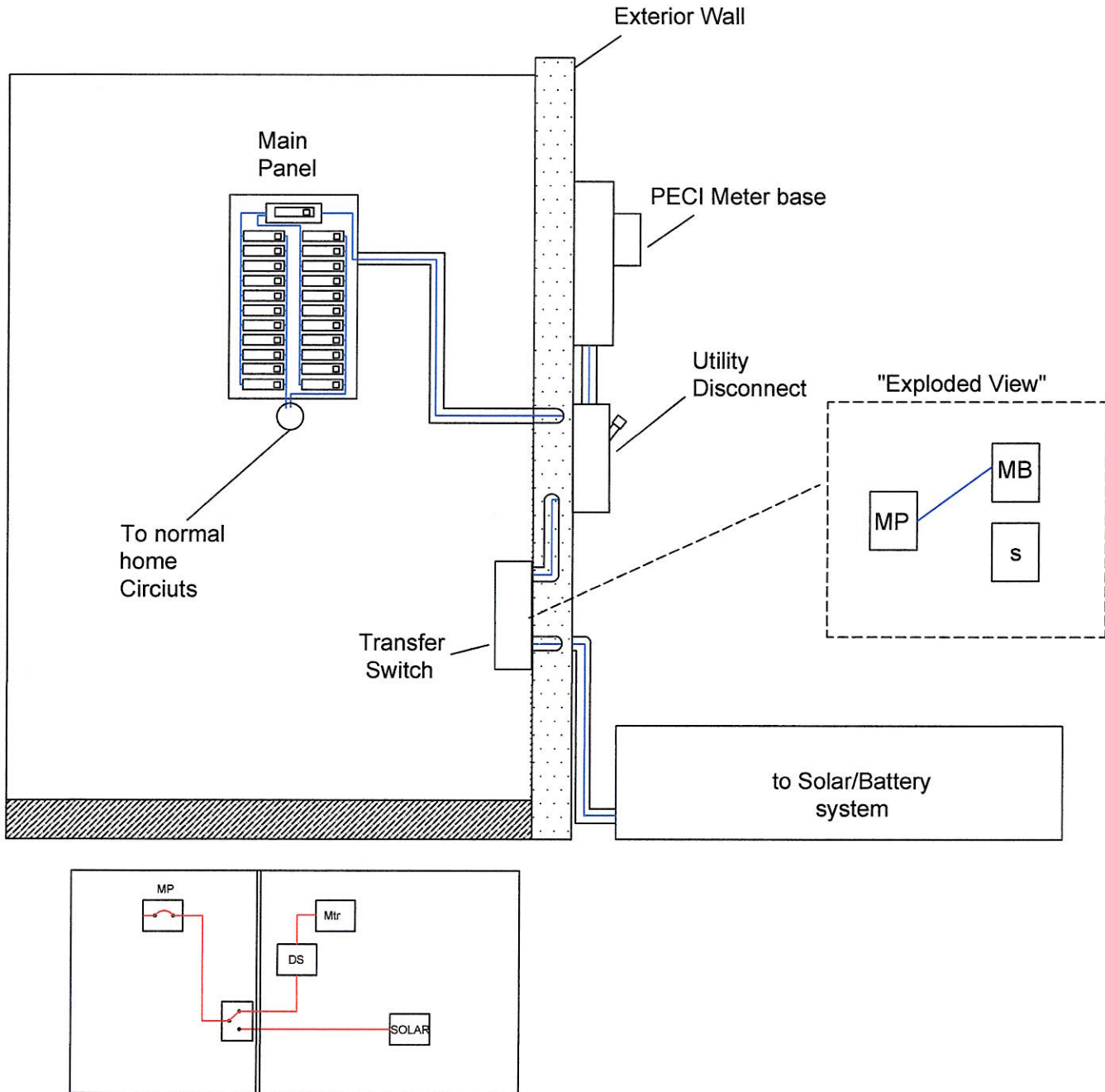


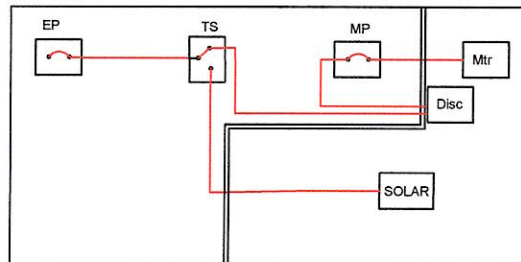
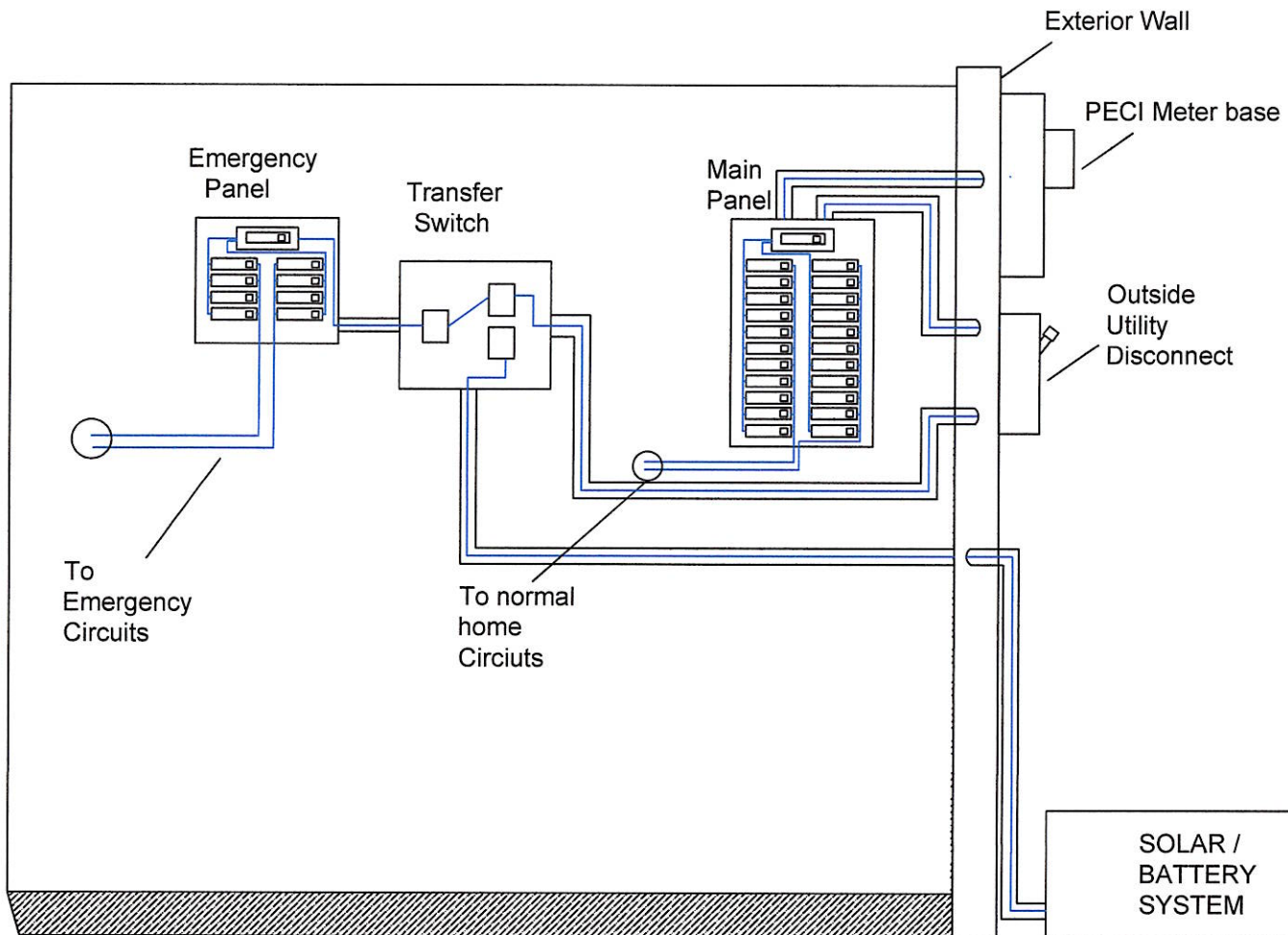
SOLAR / BATTERY SYSTEM WHOLE HOME



NOTES

1. Transfer Switch to be "Double Pole/Double Throw"
2. Transfer Switch to be Mechanically designed to prevent connecting both.
The "Utility Source" & "Generator" in parallel.
3. Transfer Switch must be "Break before Make" type.
4. The Jurisdiction- having authority must inspect and approve installation.
5. Installation must comply with all pertinent codes & ordinances
6. Outside Utility disconnect must be visible break, lockable, & located within 10' of meter

SOLAR WITH BATTERY SYSTEM EMERGENCY PANEL



NOTES

1. Transfer Switch to be "Double Pole/Double Throw"
2. Transfer Switch to be Mechanically designed to prevent connecting both.
The "Utility Source" & "Solar Panels" in parallel.
3. Transfer Switch must be "Break before Make" type.
4. The Jurisdiction- having authority must inspect and approve installation.
5. Installation must comply with all pertinent codes & ordinances
6. Outside Utilitydisconnect must be visible break, lockable & located within 10' of meter

DATE: Jan. 24, 2019

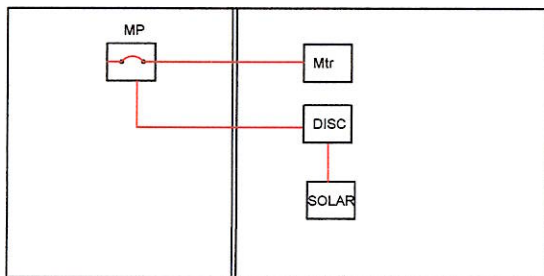
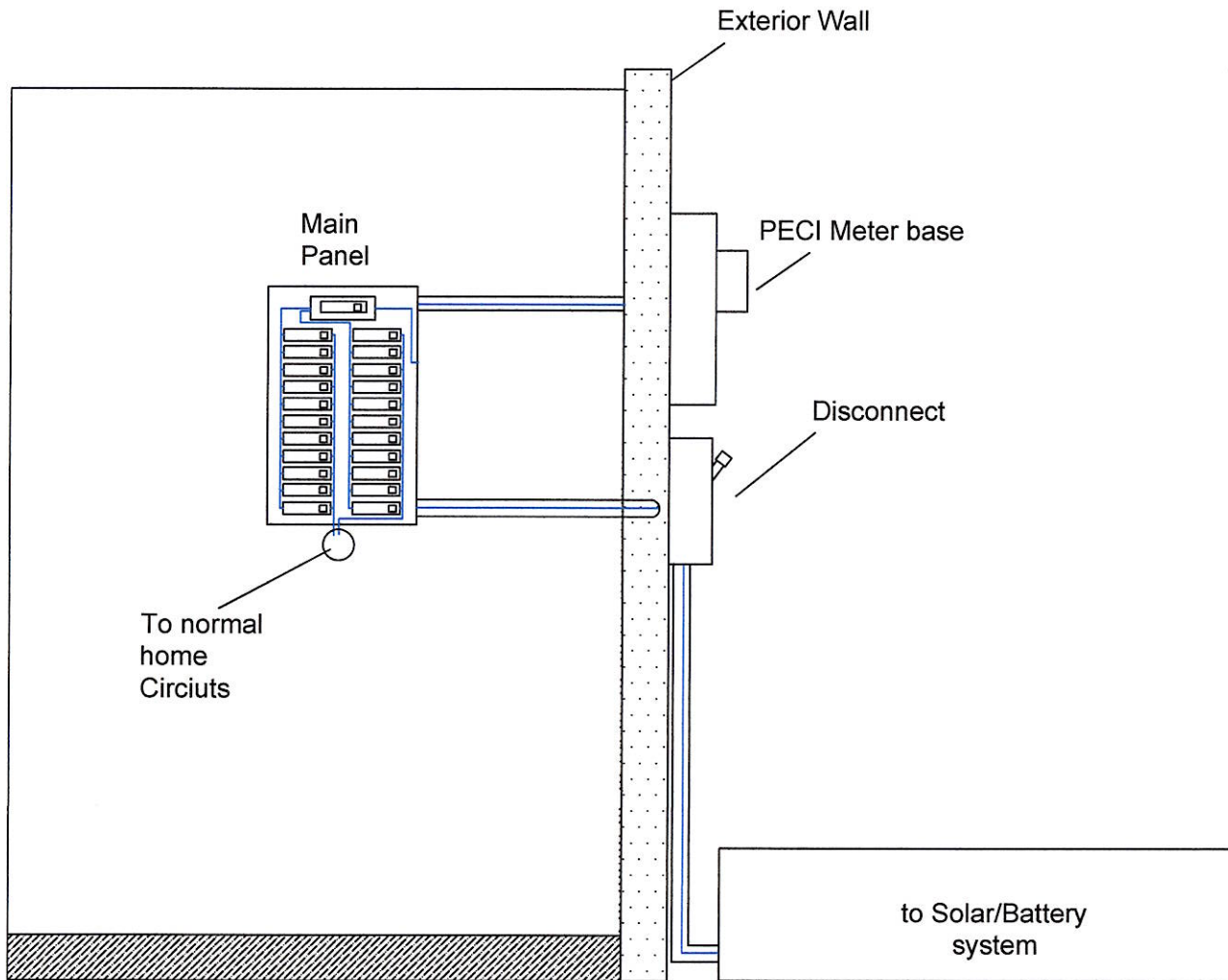
APPROVED BY: Wilson D. Saleeby

REV: Feb. 16, 2021 SHEET 2 OF 3

MEMO #40



SOLAR SYSTEM RESIDENTIAL / COMMERCIAL



NOTES

1. Transfer Switch to be "Double Pole/Double Throw"
2. Transfer Switch to be Mechanically designed to prevent connecting both.
The "Utility Source" & "Generator" in parallel.
3. Transfer Switch must be "Break before Make" type.
4. The Jurisdiction- having authority must inspect and approve installation.
5. Installation must comply with all pertinent codes & ordinances
6. Outside Utility disconnect must be visible break, lockable, & located within 10' of meter